

HAVE YOU EVER BEEN LOST?

HOW TO READ A MAP

USEFUL TIPS FOR A YOUNG TRAVELER

Asking and giving directions

Excuse me, how do I get to...?

Prepositions of place

Next to

Between

In front of

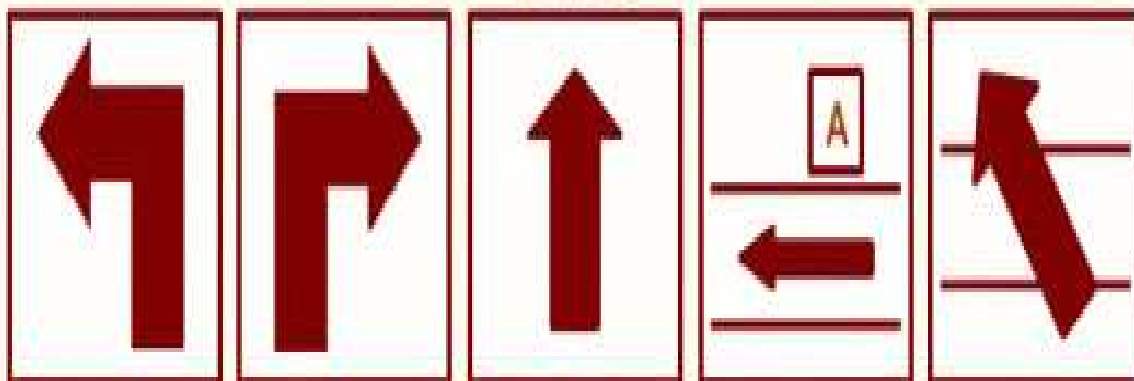
Behind

Opposite

On the corner

Giving Directions

VERBS



turn left

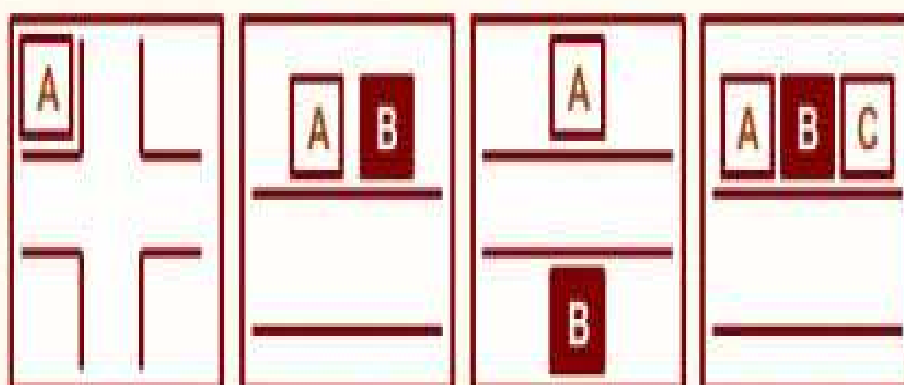
turn right

go straight
ahead

go past ...

cross

PREPOSITIONS OF PLACE



at the
corner of ...

next to

opposite

between

Directions rap

<https://www.youtube.com/watch?v=qHJe8WcVQD4>

How do I get to the restaurant ?

How do I get to the swimming pool?

How do I get to the restaurant ?

How do I get to the swimming pool?

Go straight ahead, keep going, keep going, keep going.

Go straight ahead, keep going, keep going and stop.

Turn left, turn right.

Take the 1st on the left and then stop!

Turn left, turn right.

Take the 2nd on the left and then stop!

Turn left, turn right.

Take the 3rd on the left and then stop!

Turn left, turn right.

Take the 4th on the left and then stop!

How do I get to the cinema ?

How do I get to the supermarket?

How do I get to the cinema ?

How do I get to the supermarket?

Go straight ahead, keep going, keep going, keep going.

Go straight ahead, keep going, keep going and stop.

Turn left, turn right.

Take the 1st on the right and then stop!

Turn left, turn right.

Take the 2nd on the right and then stop!

Turn left, turn right.

Take the 3rd on the right and then stop!

Turn left, turn right.

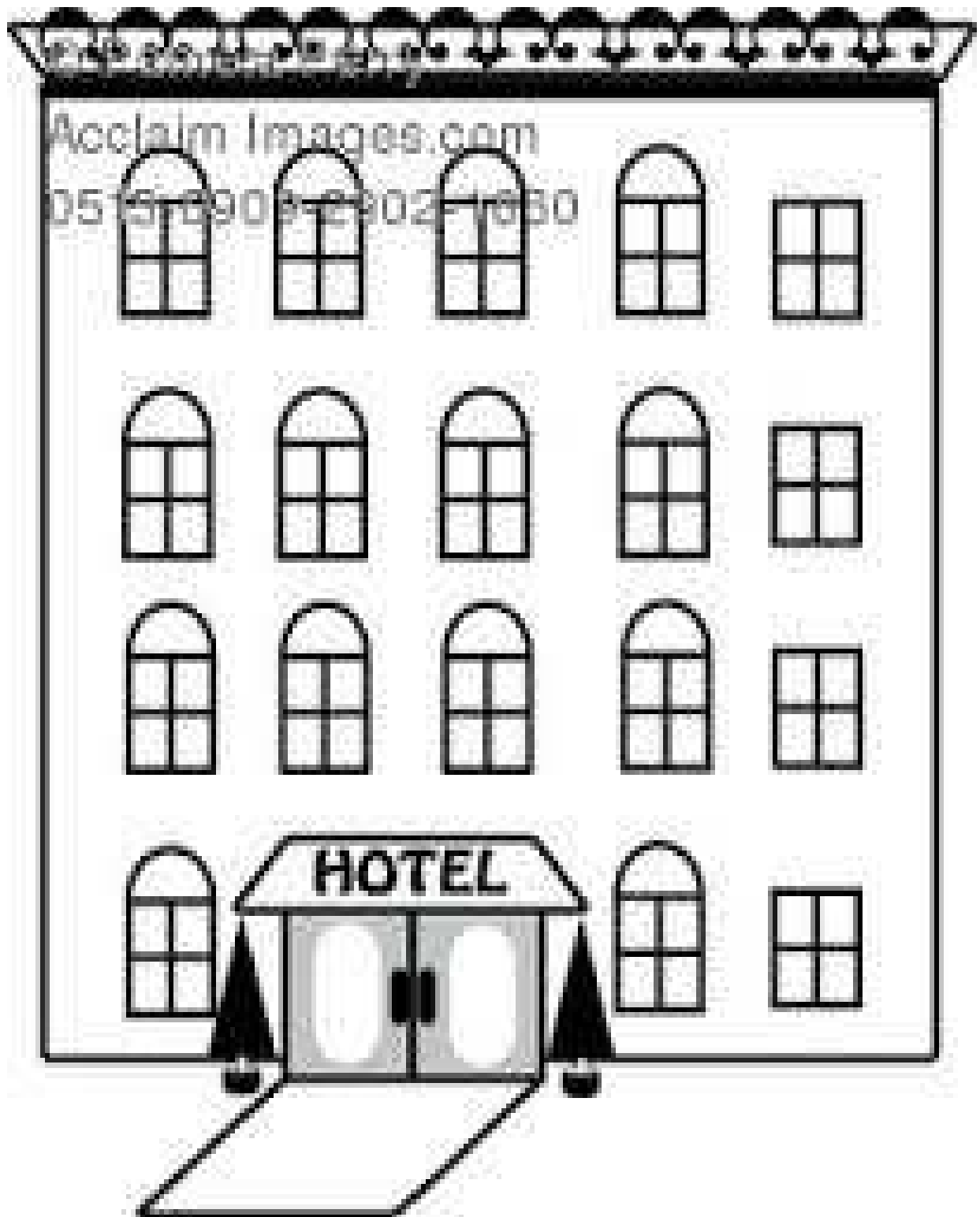
Take the 4th on the right and then stop!

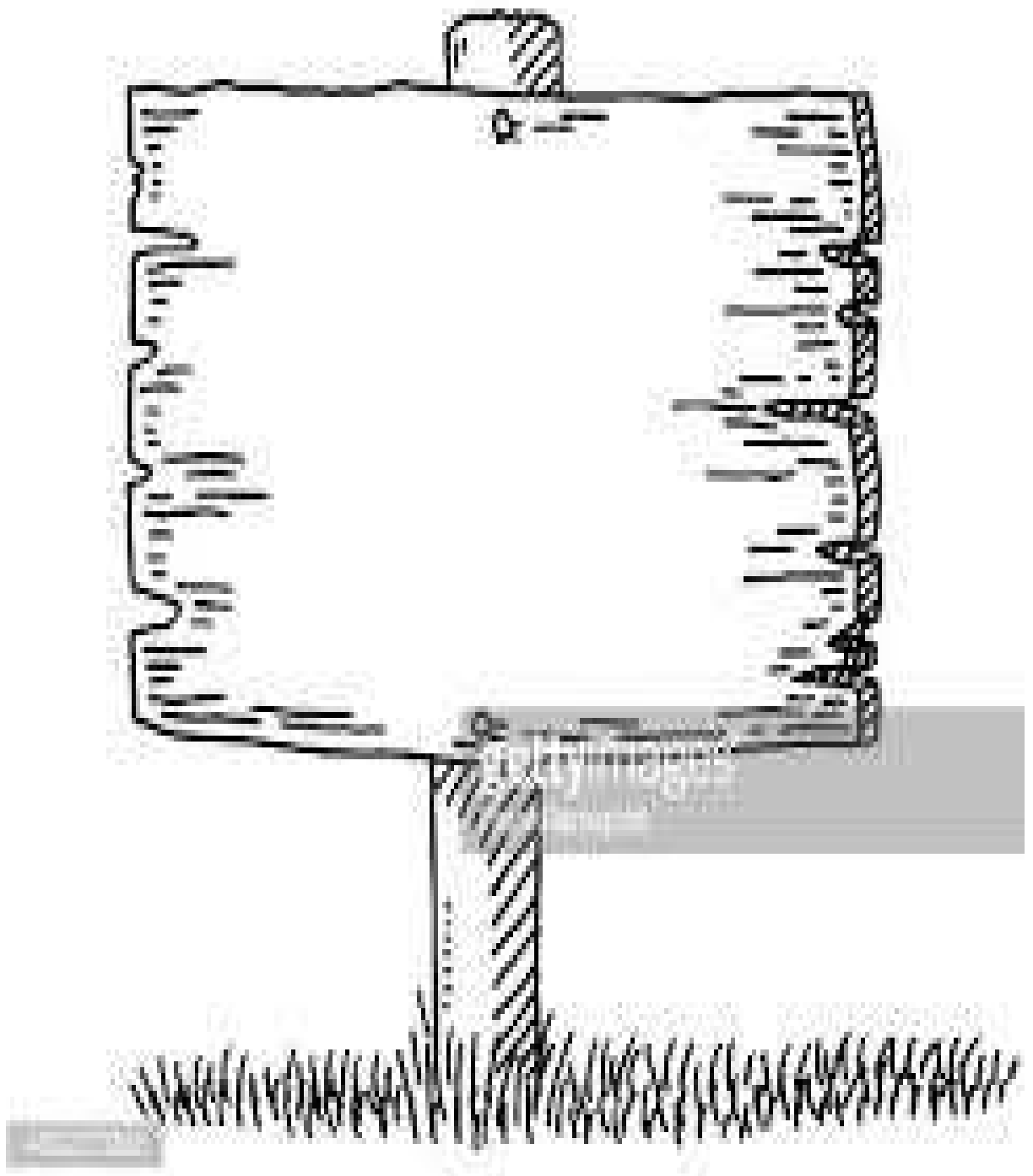
Do you know how to read a map and its legend?

Do you know how to find roads, rivers and places in the map?

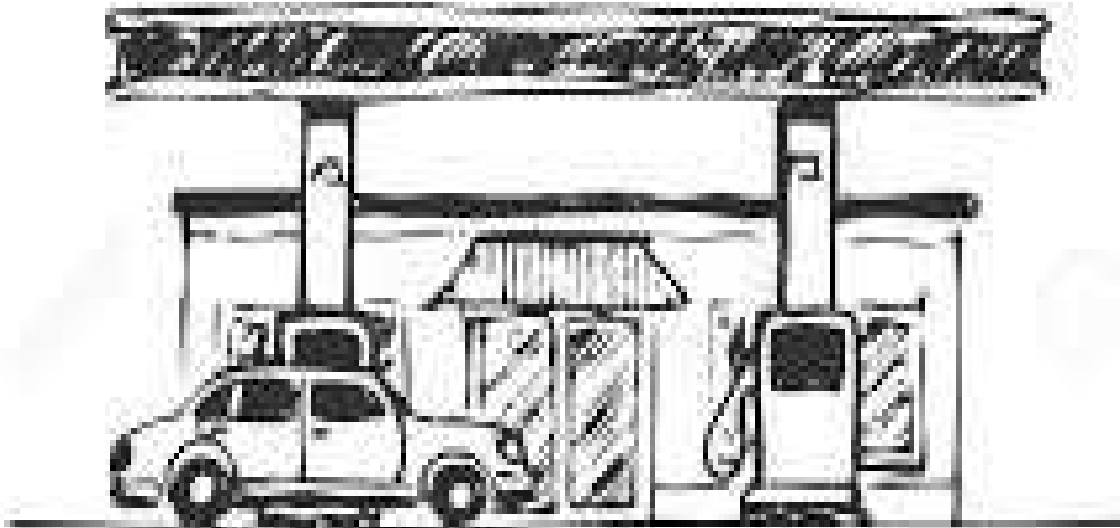
/Drawings for younger students/





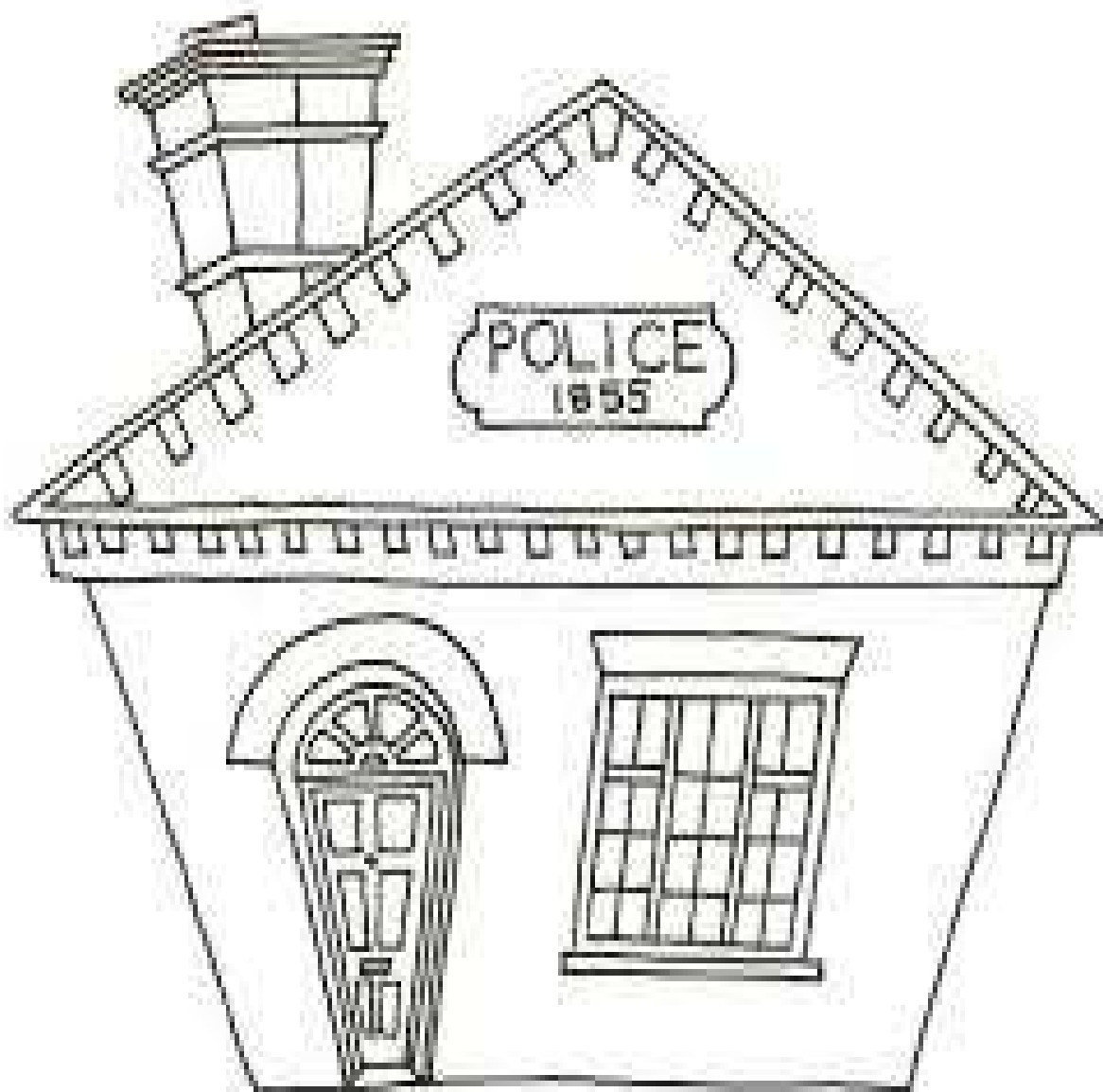


FUEL



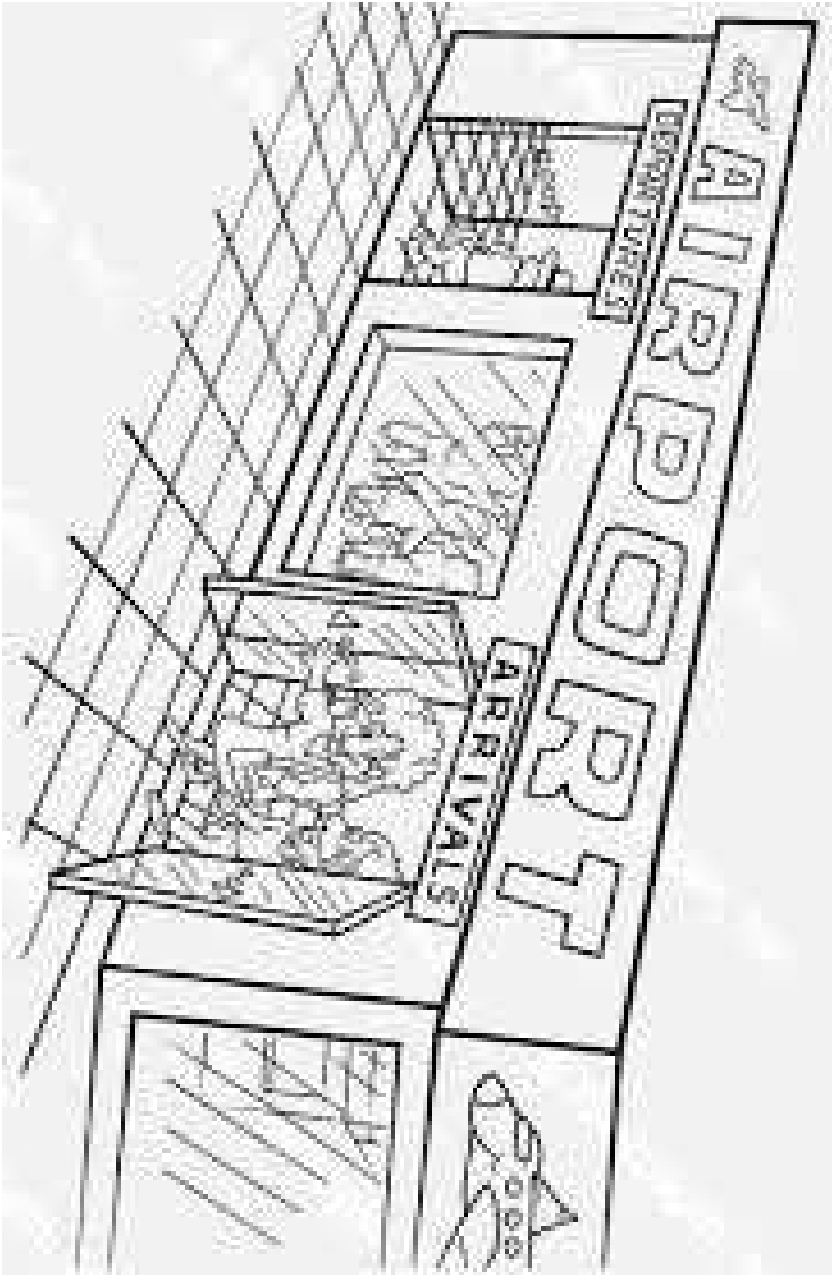
EPS8

Sketch vector illustration





© Can Stock Photo - csp16337126

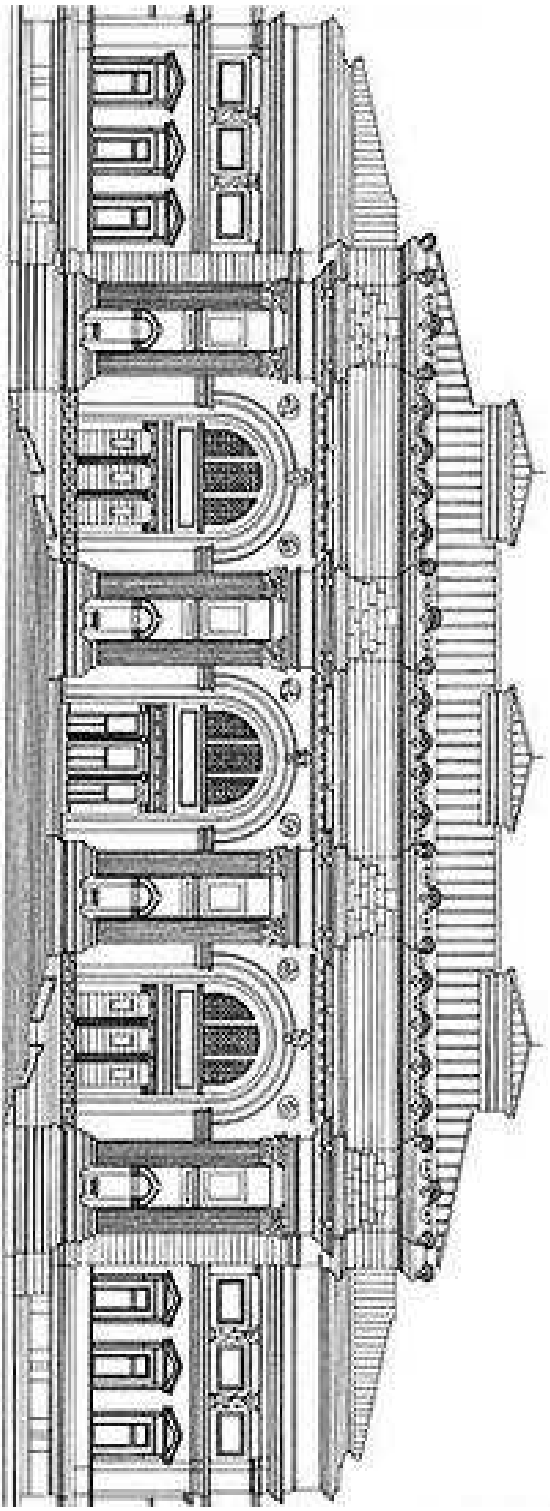












THE METROPOLITAN MUSEUM OF ART - NEW YORK



